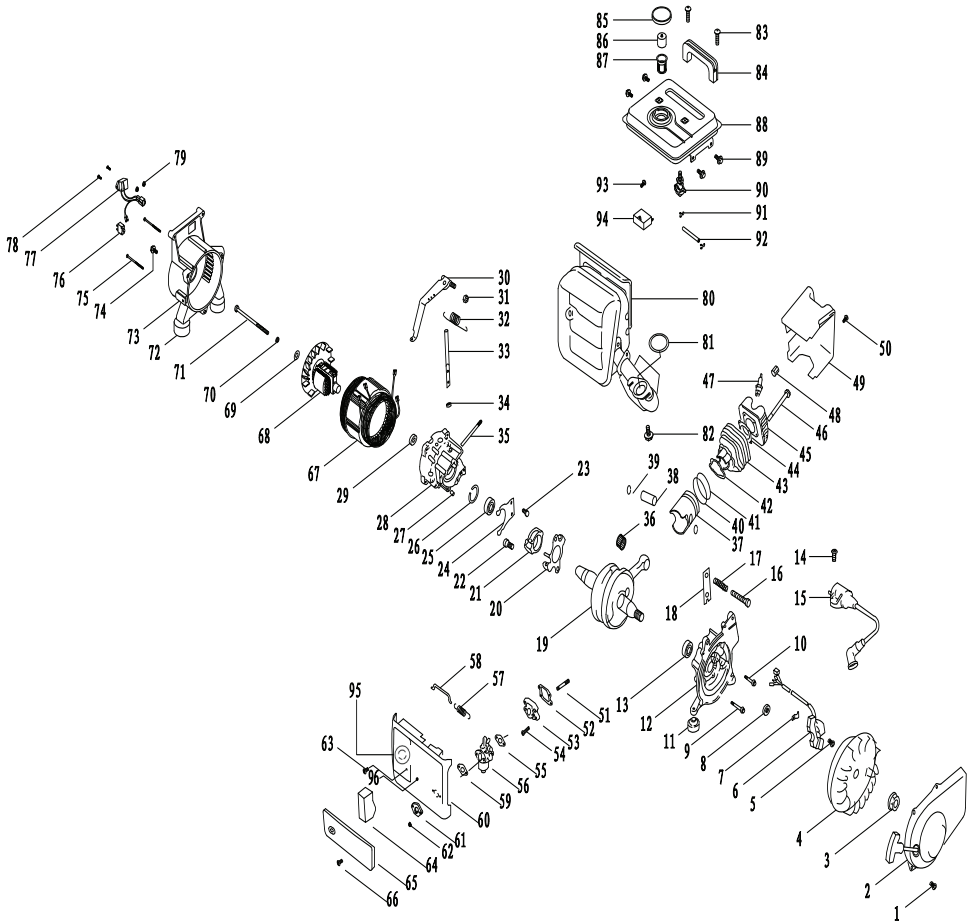


EXPLODED VIEW



SPARE PARTS LIST

| | Quantity | Material | No. | Quantity | Material | | |
|----|-----------------------|----------|--------------------|----------|--------------------|---|-------------------|
| 1 | bolt | 3 | steel | 29 | oil seal | 1 | steel |
| 2 | starter | 1 | metal and plastic | 30 | rpm arm | 1 | metal |
| 3 | nut | 1 | steel | 31 | nut | 1 | steel |
| 4 | flywheel | 1 | aluminum | 32 | rpm spring | 1 | steel |
| 5 | nut | 1 | steel | 33 | rpm gun | 1 | metal |
| 6 | ignition 1 | 1 | steel and plastic | 34 | oil seal | 1 | rubber |
| 7 | clip | 1 | metal | 35 | bolt | 1 | steel |
| 8 | oil seal | 1 | rubber | 36 | needle bearing | 1 | steel |
| 9 | bolt | 1 | steel | 37 | piston | 1 | aluminum |
| 10 | bolt | 1 | steel | 38 | piston pin | 1 | steel |
| 11 | rubber feet | 2 | rubber | 39 | piston pin blocker | 1 | steel |
| 12 | left crankcase | 1 | aluminum | 40 | 2nd ring | 1 | metal |
| 13 | bearing | 1 | steel | 41 | 1st ring | 1 | metal |
| 14 | bolt | 1 | steel | 42 | cylinder gasket | 1 | paper |
| 15 | ignition 2 | 1 | steel and plastic | 43 | cylinder | 1 | cast iron |
| 16 | bolt | 1 | steel | 44 | gasket | 1 | aluminum |
| 17 | spring | 1 | steel | 45 | cylinder head | 1 | aluminum |
| 18 | rpm bolt frame | 1 | metal | 46 | bolt | 1 | steel |
| 19 | crankshaft&rod assy | 1 | steel | 47 | spark plug | 1 | steel and china |
| 20 | clutch frame | 1 | metal | 48 | nut | 2 | steel |
| 21 | rpm lining | 1 | steel | 49 | cool guide cover | 1 | plastic |
| 22 | bolt | 1 | steel | 50 | bolt | 1 | steel |
| 23 | bolt assy | 1 | steel | 51 | bolt | 1 | steel |
| 24 | rpm handle | 1 | steel | 52 | gasket | 1 | metal |
| 25 | bearing | 1 | steel | 53 | spring valve | 1 | aluminum |
| 26 | block ring | 1 | steel | 54 | bolt | 1 | steel |
| 27 | pin | 1 | steel | 55 | gasket | 1 | paper |
| 28 | right crankcase | 1 | aluminum | 56 | carburator | 1 | aluminum |
| 57 | back up spring | 1 | steel | 88 | fuel tank | 1 | metal |
| 58 | rpm rod | 1 | steel | 89 | bolt | 4 | steel |
| 59 | gasket | 1 | paper | 90 | fuel switch | 1 | aluminum |
| 60 | panel | 1 | plastic | 91 | clip | 2 | steel |
| 61 | board | 1 | metal | 92 | fuel pipe | 1 | rubber |
| 62 | nut | 1 | steel | 93 | bolt | 1 | steel |
| 63 | bolt | 1 | steel | 94 | capacitance | 1 | plastic and metal |
| 64 | foam | 1 | sponge | 95 | socket | 3 | plastic |
| 65 | filter cover | 1 | plastic | 96 | lamp | 1 | plastic |
| 66 | bolt | 1 | steel | | protector | 2 | plastic |
| 67 | stator | 1 | steel and aluminum | | | | |
| 68 | rotor | 1 | steel | | | | |
| 69 | gasket | 1 | steel | | | | |
| 70 | spring gasket | 1 | steel | | | | |
| 71 | bolt | 1 | steel | | | | |
| 72 | rubber feet 1 | 2 | rubber | | | | |
| 73 | alternator back cover | 1 | aluminum | | | | |
| 74 | bolt | 1 | steel | | | | |
| 75 | bolt | 1 | steel | | | | |
| 76 | DC protector | 1 | plastic | | | | |
| 77 | dc socket | 1 | plastic | | | | |
| 78 | bolt | 1 | steel | | | | |
| 79 | nut | 1 | steel | | | | |
| 80 | muffler | 1 | metal | | | | |
| 81 | muffler gasket | 1 | mix | | | | |
| 82 | bolt | 1 | steel | | | | |
| 83 | bolt | 1 | steel | | | | |
| 84 | handle | 1 | plastic | | | | |
| 85 | fuel tank cap | 1 | metal and rubber | | | | |
| 86 | mix cup | 1 | plastic | | | | |
| 87 | fuel filter | 1 | plastic | | | | |